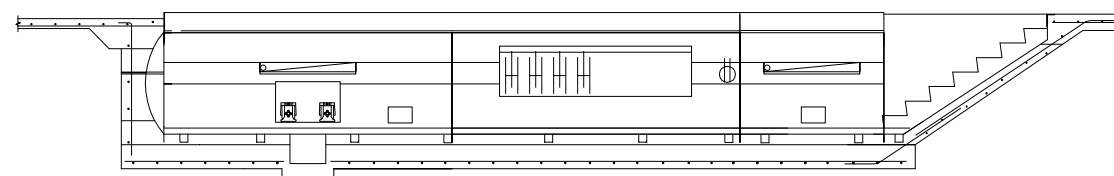


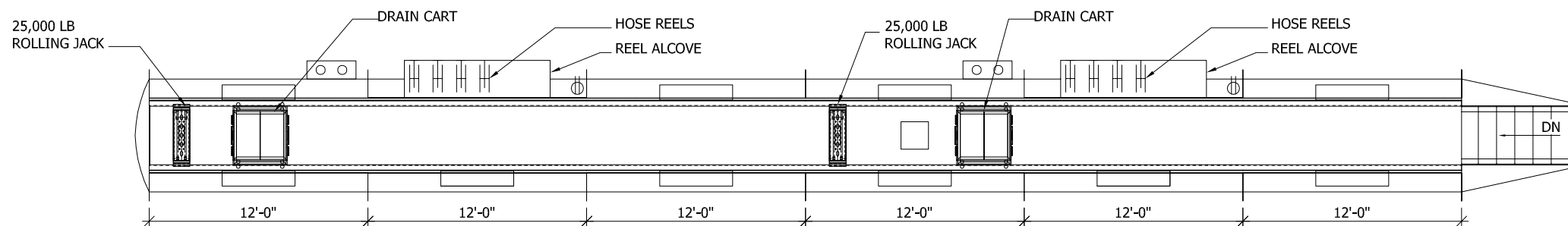
**30' HD IN-LINE STAIR AT RIGHT**

1/4" = 1'-0"



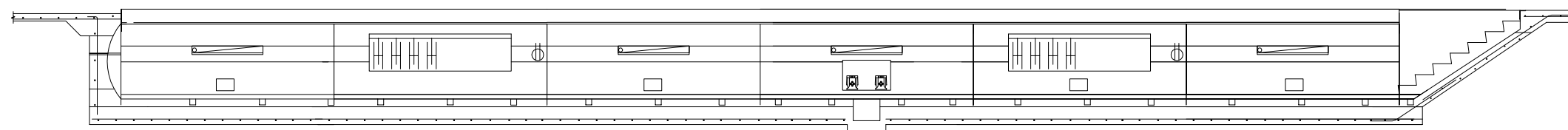
**30' HD LONGITUDINAL SECTION**

1/4" = 1'-0"



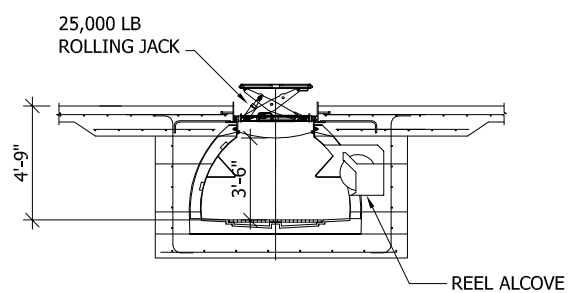
**72' HD IN-LINE STAIR AT RIGHT**

1/4" = 1'-0"



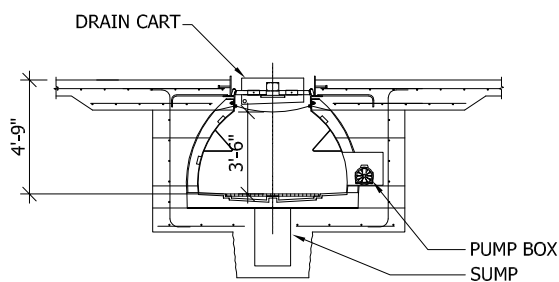
**72' HD LONGITUDINAL SECTION**

1/4" = 1'-0"



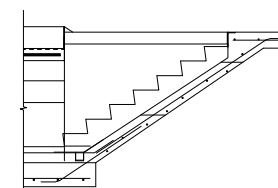
**SERVICE BAY SECTION**

1/4" = 1'-0" AT REEL ALCOVE



**SERVICE BAY SECTION**

1/4" = 1'-0" AT PUMP BOX



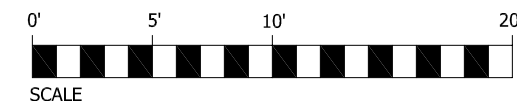
**HD STAIR SECTION**

1/4" = 1'-0"

**NOTES:**

1. SERVICE BAY MODULES HAVE A STANDARD LENGTH OF 12'-0".
2. NON-STANDARD DIMENSIONS ARE EASILY ACCOMODATED.
3. ENVIROLUBE IS SUITABLE FOR NEW CONSTRUCTION AND RETRO-FIT APPLICATIONS.
4. CONTACT ILS ENGINEERING (541-517-1393) FOR COMPLIMENTARY PRE-DESIGN SERVICES.

\* THIS SHEET WAS DRAWN 34"x22", NOT TO SCALE IF REDUCED



© 2014 INTEGRATED LUBE SERVICE, INC

REVISIONS		
NO.	DATE	REMARKS

DESIGNED BY  
JERRY STEELE  
DRAFTED BY  
MARTY VAUGHN  
CHECKED BY  
MARK RICHARDS

**EXAMPLE DRAWINGS  
TRUCKING OPTIONS  
30' & 72' HEAVY DUTY UNITS**



PO BOX 3227 - GRASS VALLEY - CA - 95945  
800-700-3309

30' AND 72' HD IN-LINE UNITS



DATE 06/03/2014

SHEET NO.

**EL3**